



180 DEGREES ANNUAL REPORT FY22



TURNING LIVES AROUND.



CEO Dan Pfarr and Board Chair Amy Diesen

DEAR FRIENDS,

As the COVID-19 pandemic continued into its second year, and schools, businesses, and institutions shuttered, your generosity enabled 180 Degrees' shelters and programs to continue to operate 24/7 – without missing a day of service. **Thank you.**

As schools, hospitals, law enforcement, other youth agencies reduced hours, we experienced a drop in client referrals. While the number of clients served this year is about half compared to prior years, the *need* for services is even greater than in prior years.

2022 marked an unprecedented rise in the acute mental health needs of our clients. This prompted new investments in staff training and a renewed service focus, embedding **Trauma Responsive Care as the cornerstone of our agency's culture.** With it, we seek to deliver more responsive, compassionate care to those who turn to us.

Many generous donors helped complete a successful \$750,000 capital campaign to remodel Brittany's Place. This launched a larger initiative to upgrade our aging facilities and to integrate design principles that foster healing: light-filled spaces, calming spaces, and access to the natural world. Fundraising is underway to support renovations of our Clifton Place program and other youth shelters.

We're grateful to our generous donors and funding partners, our dedicated volunteers, and service partners who stand with us. Thank you to our dedicated staff who tirelessly worked back-to-back ten-hour shifts to reduce risk of viral transmission in our shelters so that we remained open.

With your help, we are better prepared to meet the challenges ahead.

Sincerely,

Dan Pfarr
President/CEO
180 Degrees, Inc

Amy Diesen
Board of Directors President
Retired, Vice President, Ameriprise Financial Services



FY22 PROGRAMS & IMPACT

YOUTH SHELTERS AND SUPPORTIVE HOUSING PROGRAMS

BRITTANY'S PLACE

Opened in 2014 as Minnesota's first and largest emergency shelter for girls ages 10-19 experiencing sex trafficking, Brittany's Place has evolved to offer a full continuum of services for youth of all genders. **127 youth received support on the streets or in our shelter. 85% of shelter clients exited to safe, stable housing.**

HOPE HOUSE

The only shelter for youth under 18 west of Highway 100, Hope House meets the needs of southwest metro homeless youth ages 14-19. **60 youth received safe shelter for up to 90 days, plus meals, trauma services and case management. 72% exited to safe, stable housing.**

ONWARD HOUSE

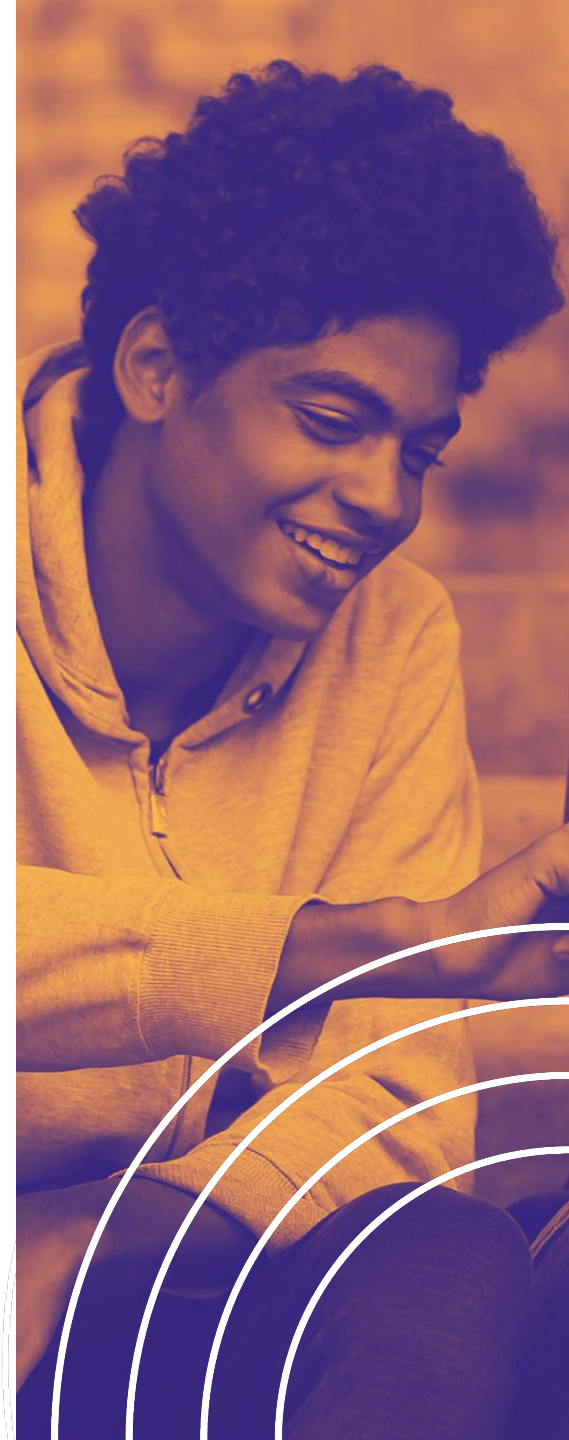
A pilot project with non-profit partner Onward Eden Prairie, Onward House offers long-term, supportive housing for young women, ages 18-22, experiencing housing instability. **Four clients achieved long-term housing stability paired with case management services.**

ST. CLOUD

The only shelter for youth under 19 in central Minnesota, St. Cloud Youth Shelter draws clients from thirteen largely rural counties. **95 youth accessed safe shelter, meals, trauma services and case management. 79% completed a safety plan; 75% continued with education while in the program. 89% could name one positive adult to turn to other than staff upon exit. 71% exited to a safe destination.**

VONWALD

The only shelter for youth under 19 in southeast Minnesota, Von Wald Youth Shelter draws clients from 22 largely rural counties. **63 youth accessed safe shelter, meals, trauma services and case management. 40% completed a safety plan; 71% continued with education while in the program. 99% could name one positive adult to turn to other than staff upon exit. 80% exited to a safe destination. 30 southeast Minnesota clients received foster family placement and 24-hour support.**



FY22 PROGRAMS & IMPACT

COMMUNITY RE-ENTRY SERVICES

CLIFTON PLACE

Now in its 50th year, Clifton Place provides short-term housing to men rebuilding their lives following incarceration. Through support groups and structured programming, clients secure employment, establish family connections, and exit to stable housing. **175 clients were housed. 75% secured employment.**

CLIFTON APARTMENTS

Piloted in November 2021, 180 Degrees operated 28 units of affordable housing in Minneapolis. 48 clients were stably housed, avoiding homelessness.

COMMUNITY-BASED CASE MANAGEMENT

Case Management services are offered to youth, young adults and families who experience homelessness, sex trafficking, domestic violence and justice-system involvement. **208 clients received ongoing, comprehensive support, advocacy and connections to services.**



FY22 ACCOMPLISHMENTS

- A June 2022 ribbon cutting celebrated the completion of a \$750,000 capital campaign renovating Brittany's Place. Generous donors funded new outdoor spaces, improved security, and the launch of Transitional Living, a new housing program providing housing for up to 18 months.
- Awarded \$1.5 million from the Minnesota Department of Human Services to kick off the Building Brighter Futures capital campaign to renovate St. Cloud Youth Shelter.
- Awarded \$1 million from American Recovery Act funds and Hennepin County for the renovation of Clifton Place, the first major renovation since 1971.
- Completed an agency-wide assessment on client and staff trauma. Findings guided development of a new service philosophy and organizational culture centered on building excellence and responsiveness to client trauma.
- With support from the Carlson Family Foundation, piloted on-site mental health services specific to a shelter environment. Pilot will inform expansion to other 180 Degrees' program sites.



(Top) H.B Fuller volunteers in front of Lori Greene mosaic, created for Brittany's Place.

(Bottom) H.B Fuller volunteers help clean and organize the kitchen and living room at Brittany's Place.

FY22 HIGHLIGHTS



(From left to right, top to bottom)

- Shelter clients enjoy an afternoon at Target Field for a Minnesota Twins baseball game.
- 180 Degrees employees doing some gardening at our summer all-staff gathering.
- Olmsted County Sheriff Kevin Torgerson and 91-year-old Chuck VonWald, former sheriff and founding member of 180 Degrees VonWald Youth Shelter.
- A Brittany's Place client is ready for high school graduation at North High in Minneapolis.
- Youth from VonWald Shelter enjoy fishing at a local park.
- Amy Diesen, Board of Directors president, celebrates Cinco de Mayo with Clifton Place clients and staff.
- 180 Degrees staff from around the state gather in person at our all-staff meeting, June 2022.

CLIENTS SERVED IN FY22

Youth Shelters / Housing

 **313** sheltered

81% exited to safe, appropriate destination

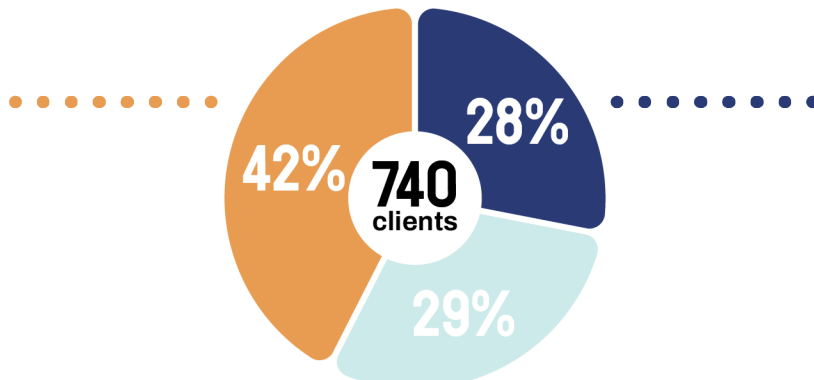
OPEN 24/7/365

0 Zero days closed during the pandemic

Building Social Connections

70% youth can name at least 1 safe adult to turn to, other than staff at program exit

Of those in shelter, number who self-report concerns of:



Community Reentry Housing

 **219** sheltered

75% secured housing and employment

0 Zero days closed during the pandemic

Community Based Services

 **208** received case management services

85% Gained skills and could name one supportive adult to turn to in time of crisis

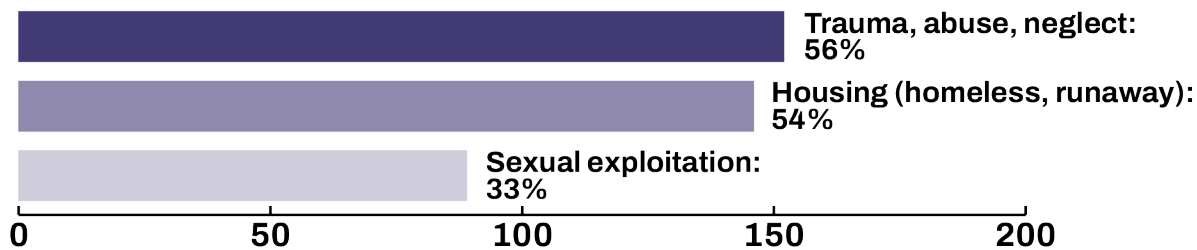
Community Case Mgmt By Service

Youth Case Mgmt: 135 clients

Family Case Mgmt: 73 clients

65%

35%



STATEMENT OF FINANCIAL POSITION

	2022
ASSETS	
CURRENT ASSETS	\$1,674,934
NET PROPERTY & EQUIPMENT	\$6,383,843
OTHER ASSETS	-
TOTAL ASSETS	\$8,058,777
LIABILITIES	
CURRENT LIABILITIES	\$899,718
LONG TERM LIABILITIES	\$2,498,984
TOTAL LIABILITIES	\$3,398,702
NET ASSETS	
UNDESIGNATED	\$4,032,117
BOARD DESIGNATED	\$360,000
WITH DONOR RESTRICTION	\$267,958
TOTAL NET ASSETS	\$4,660,075
TOTAL LIABILITIES AND NET ASSETS	\$8,058,777

Year Ended June 30, 2022

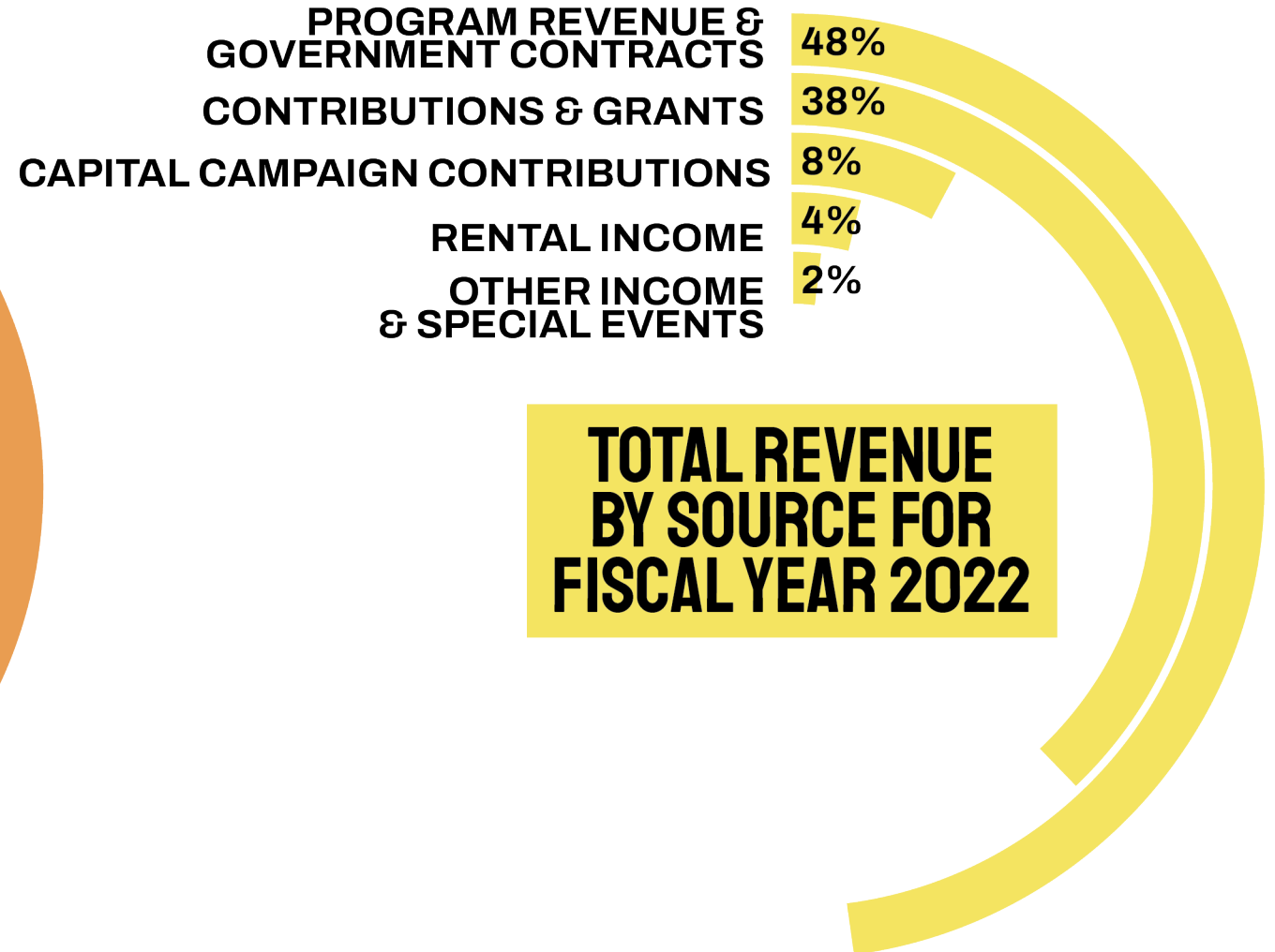
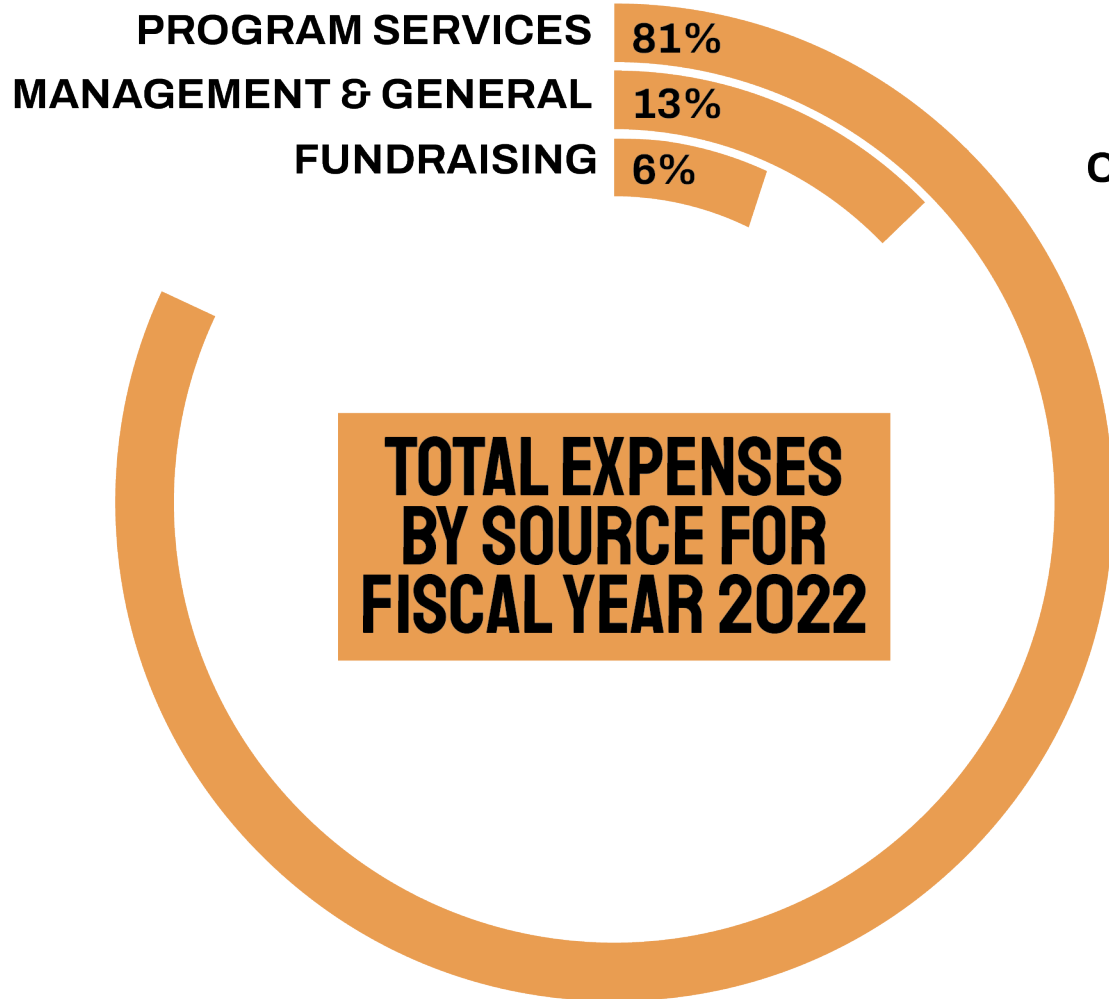
STATEMENT OF ACTIVITIES

	2022
REVENUE	
PROGRAM REVENUE AND GOVERNMENT CONTRACTS	\$3,032,811
CONTRIBUTIONS AND GRANTS	\$2,401,695
CAPITAL CAMPAIGN CONTRIBUTIONS	\$521,450
RENTAL INCOME	\$215,285
SPECIAL EVENT INCOME	\$14,350
OTHER INCOME	\$93,014
NEW MARKET TAX CREDIT LOAN OF FORGIVENESS	-
TOTAL REVENUE	\$6,278,605
EXPENSES	
PROGRAM SERVICES	\$4,910,431
SUPPORTING SERVICES	
MANAGEMENT AND GENERAL	\$756,854
FUNDRAISING	\$376,854
TOTAL EXPENSES	\$6,044,139
CHANGE IN NET ASSETS	\$234,466
NET ASSETS AT THE BEGINNING OF THE YEAR	\$4,425,609
NET ASSETS AT THE END OF THE YEAR	\$4,660,075

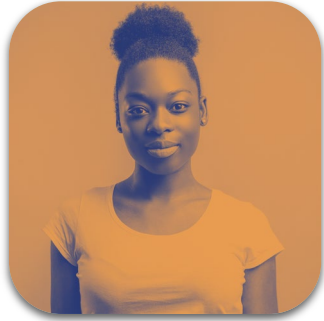
Year Ended June 30, 2022

NOTE: 180 Degrees and its subsidiaries Turning Lives Around and Community Re-Entry Services are included in this combined financial report.

FY22 EXPENSES & REVENUE BY SOURCE



YOUR IMPACT: CLIENT SUCCESS STORIES



Brittany's Place is proof that lives can turn around. Last spring, in front of a cheering audience, 17-year-old Junii walked across the graduation stage, shook hands with North High School's principal and received her diploma. Amidst the backdrop of COVID, distance learning, and two years of racial unrest, this was a major accomplishment for her entire class. But, what few people knew is that Junii graduated while living at Brittany's Place and healing from sex trafficking that began when she was just 10 years old. Junii will soon move into our new Transitional Living Program as she takes her next steps towards independent living.



When he landed in prison, Deshawn was determined to return to his family. He earned his GED in prison and when he was released to Clifton Place, he received support to adjust to a new world. After three months, Deshawn had found a manufacturing job that he loved. He moved into his own apartment and invited his kids over for a BBQ dinner. Staff members at Clifton Place said, "Deshawn worked so hard that he made it look simple." At Clifton Place he found the support and resources to continue turning his life around.



Colby lived in a home filled with anger and violence. The last time his father hit him, Colby knew that his own anger would boil over if his father ever touched him again, so he left that night. He had heard about the VonWald Youth Shelter from some other kids at school and showed up with nowhere else to go. The staff were friendly but Colby didn't trust anyone. He kept his guard up at all times; never a smile, never a laugh. One afternoon, a staff member offered to take Colby fishing. It was quiet and Colby loved to fish. After a few hours, they left the lake and returned to the shelter. They hadn't caught much, but Colby cracked a smile. The healing process had begun.

180 DEGREES BOARD OF DIRECTORS

President

Amy Diesen

Retired, Vice President, Ameriprise Financial Services

Vice President

Katy Kirchner

Senior Director, Contracted Community Care, CentreCare

Treasurer

Aubrey Hunstad

Tax Director, Vårde Partners

Secretary

Tiffany Toussaint

Manager, Talent Acquisition Mortenson Construction

Fredrick Blocton, *President, Upnet Technologies*

Dale Forsberg, *President, Watson-Forsberg Co.*

Ryan Foss, *Strategist, RJF Consultancy*

Nick Keller, *School Social Worker, St. Paul Public Schools*

Brian Kimmes, *Stewardship and Research Coordinator, Dunwoody College of Technology*

Sarah Moret, *Director, Enterprise Strategy Development, Target Corporation*

Shelley Nelson, *Client Manager, Simplify Wealth*

LEADERSHIP TEAM

President & CEO

Dan Pfarr

Chief Operating Officer

Girma Yimam

Director of Data & Quality

Patty Carlson

Programs Director

Richard Coffey

Advancement Director

Janet Hallaway



THANK YOU

**TO OUR GENEROUS DONORS,
VOLUNTEERS, AND
SERVICE PARTNERS.**



Contact Us
1301 East 7th Street
Saint Paul, MN 55106
(651) 968-8908
www.180degrees.org

